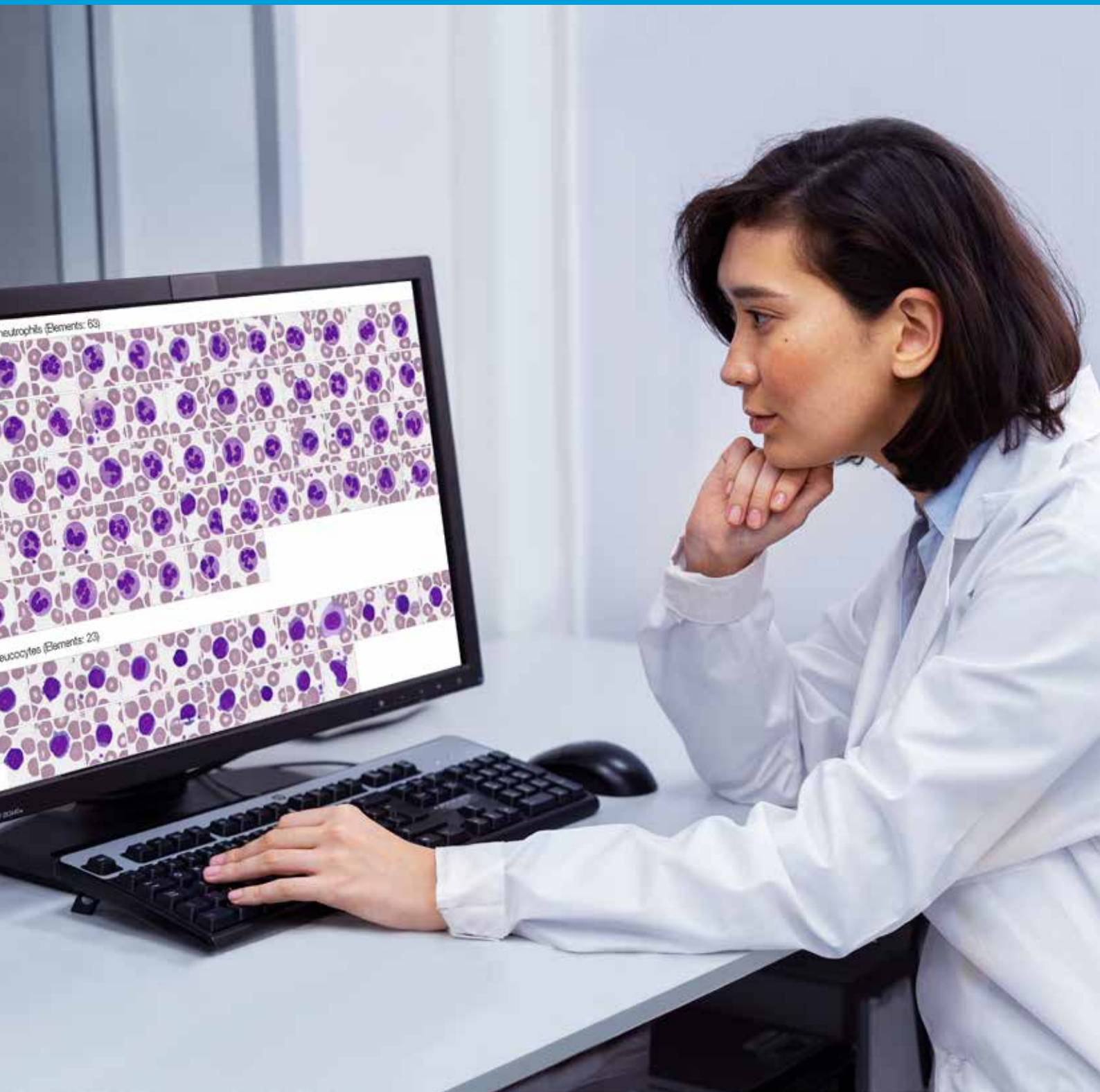
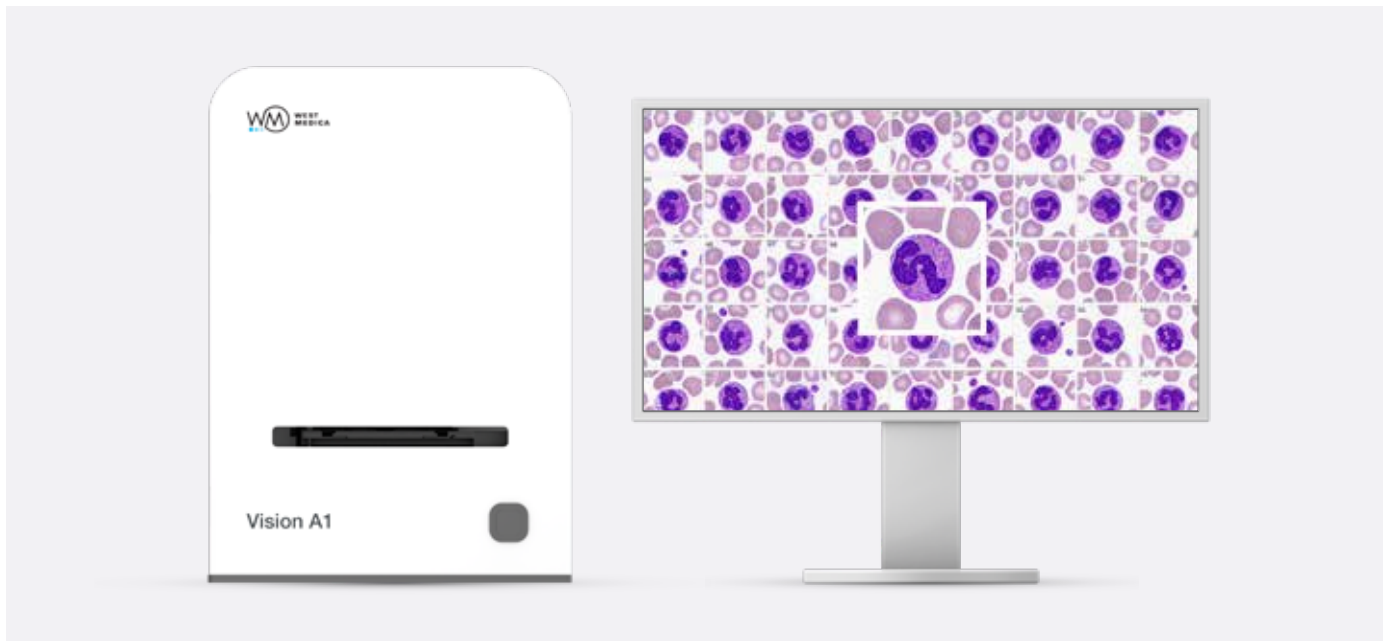


Cell Imaging Analyzers for Blood Smear Samples



Vision A1



Key features

- Loading 1 slide
- Automatic sample scanning
- Automatic analysis and pre-classification
- For small and medium-sized laboratories

Scanning process



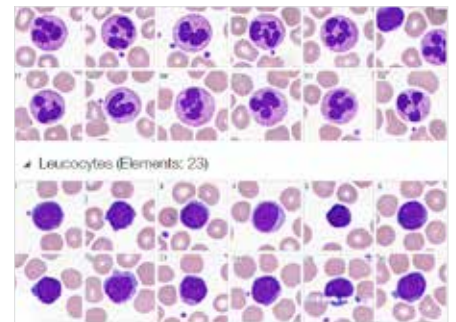
01

Place the slide to the slide holder



02

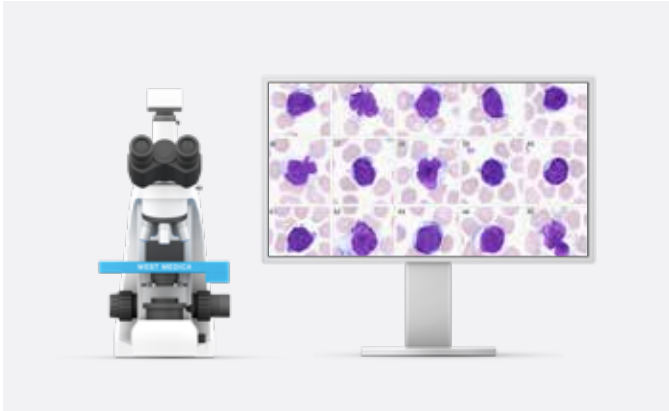
Install into the slide scanner and start scanning



03

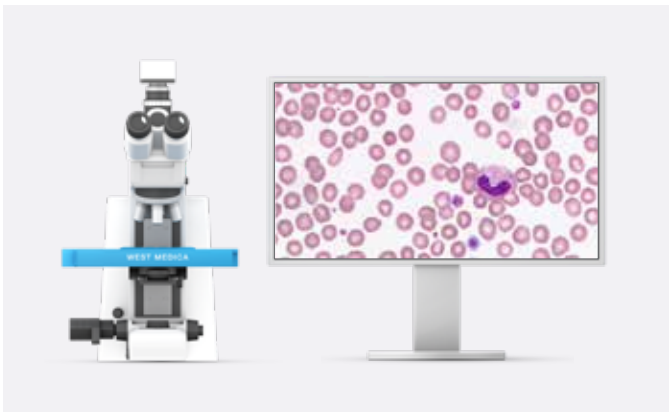
Get the result!

Vision Assist



- Loading 1 or 4 slides
- Automatic sample scanning
- Automatic analysis and pre-classification
- For small and medium-sized laboratories

Vision Pro



- Loading 4 or 8 slides
- Automatic sample scanning
- Automatic analysis and pre-classification
- Random access
- For medium and large laboratories

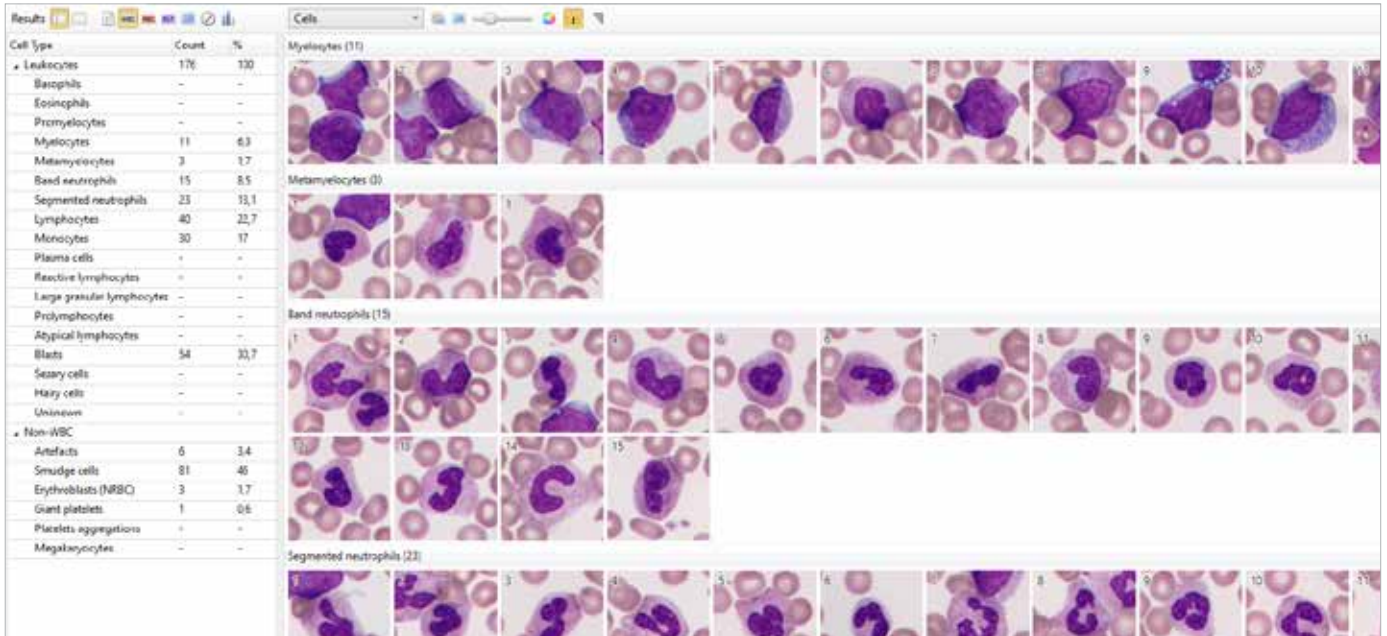
Vision Ultimate



- Loading 120 or 200 slides
- Automatic sample scanning
- Automatic analysis and pre-classification
- High scanning speed and image capture of the whole sample
- Random access and testing of urgent samples
- Night shift work without an operator
- For centralized and large-sized laboratories

Vision Hema

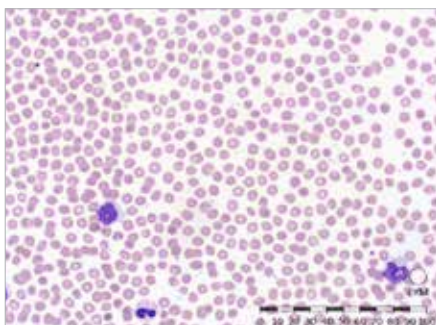
Automatic blood smear analysis



Leucocytes analysis

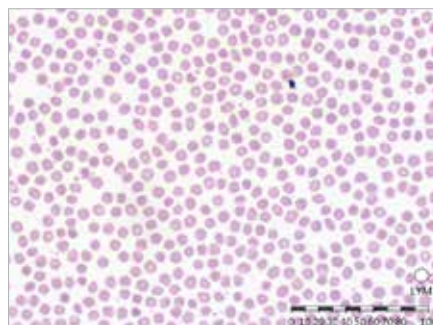
- Basophils
- Eosinophils
- Promyelocytes
- Myelocytes
- Metamyelocytes
- Band neutrophils
- Segmented neutrophils
- Lymphocytes
- Monocytes
- Reactive lymphocytes
- Blasts
- Erythroblasts

Analysis of erythrocytes and platelets



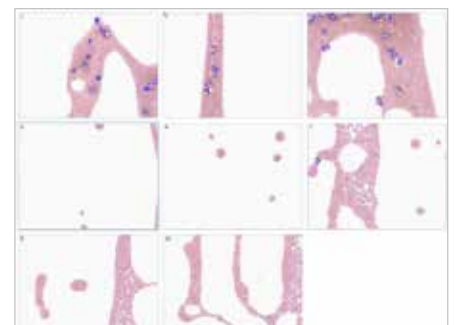
Analysis of erythrocytes

Size, color, shape, inclusions



Analysis of platelets

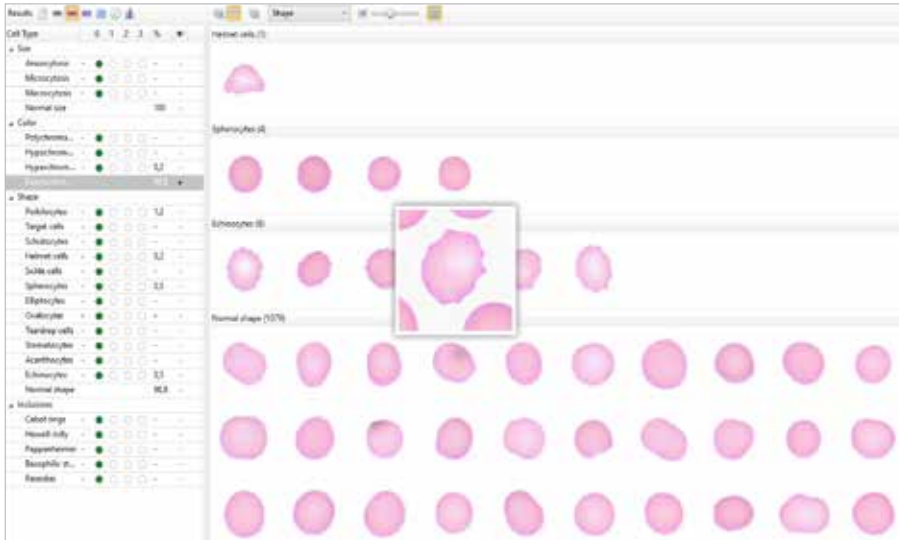
Normal, micro, macro



Scanning of blood smear tail

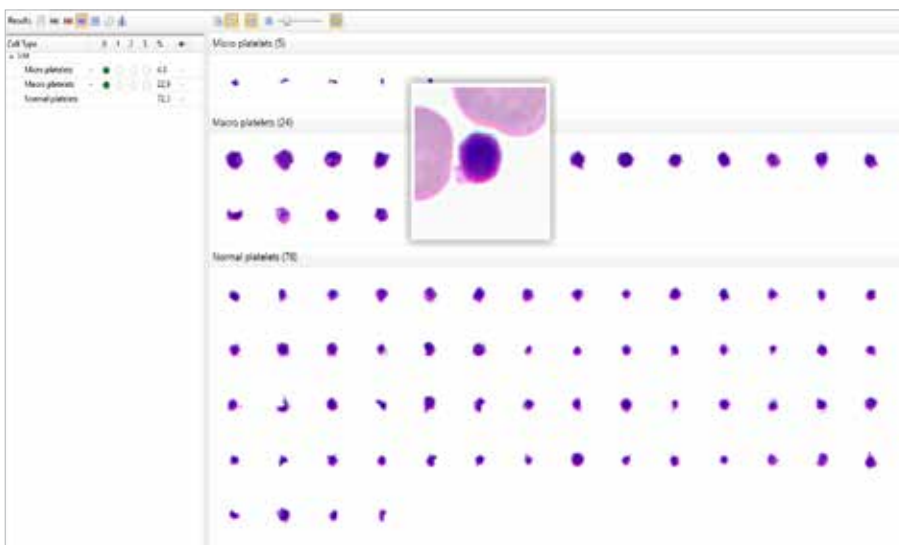
Additional assessment of atypical forms of leucocytes, assessment of platelet aggregates

Additional modules



Extended analysis of erythrocytes

Display of identified erythrocytes in a gallery view. Automatic analysis of erythrocytes by size, color, forms and inclusions. Classification of erythrocytes by 26 parameters

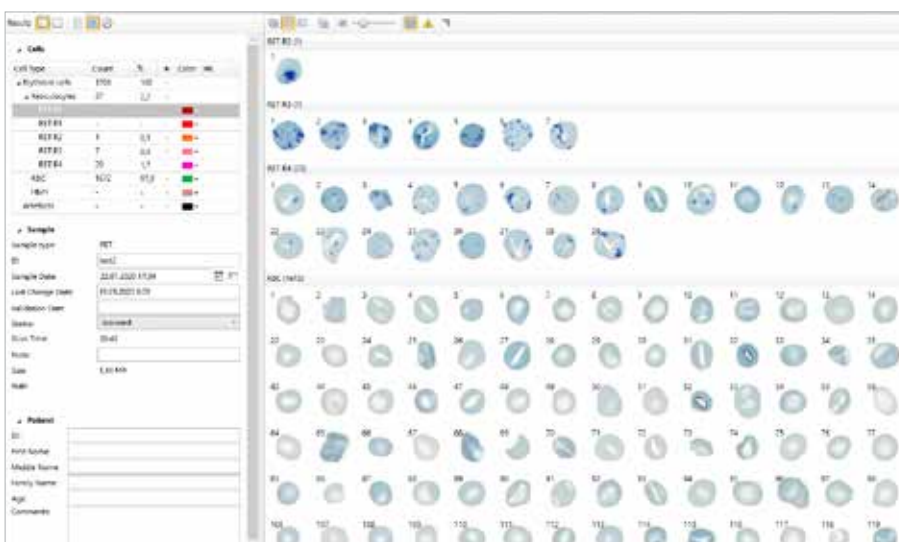


Extended analysis of platelets

Display of identified platelets in a gallery view. Automatic analysis of platelets by 4 parameters: micro, macro, giant, normal.

Detectable parameters:

minimum, average and maximum platelet diameters, average platelet area



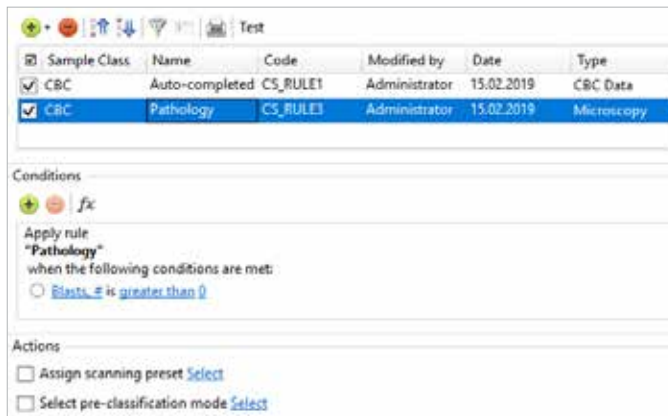
Analysis of reticulocytes

Digital morphology of reticulocytes. Automatic collection of 1000 erythrocytes, search and counting of reticulocytes. Classification of reticulocytes and gallery creation.

Detectable parameters:

reticulocyte content, reticulocyte formula, reticulocyte maturity distribution, reticulocyte indices

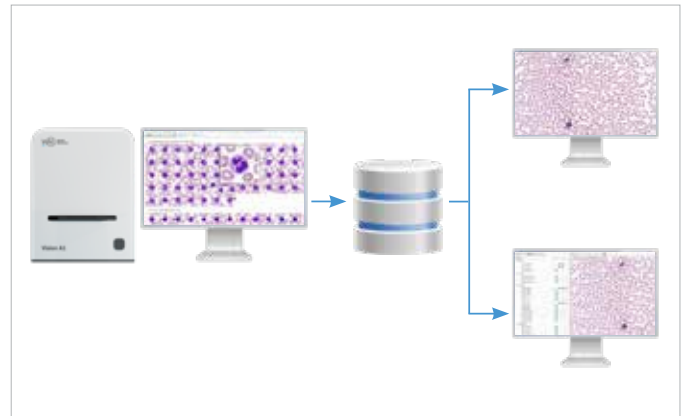
Vision Manager



www.wm-vision.com

Data processing rules for analysis procedure automation

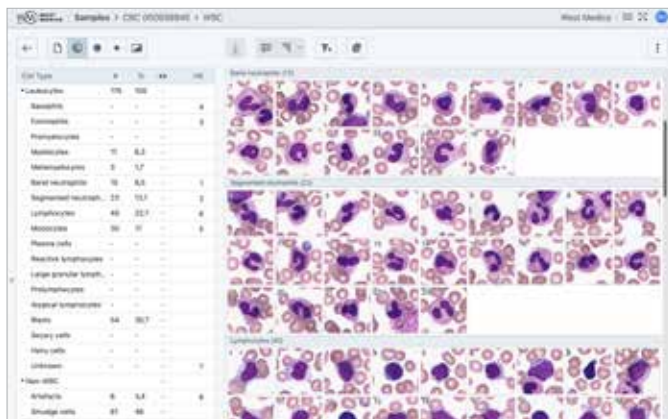
Vision Remote



www.wm-vision.com

Remote workstation

Vision Suite



www.vision-suite.com

Remote operation of Vision software via Internet browser

Vision Expertise



www.vision-expertise.com

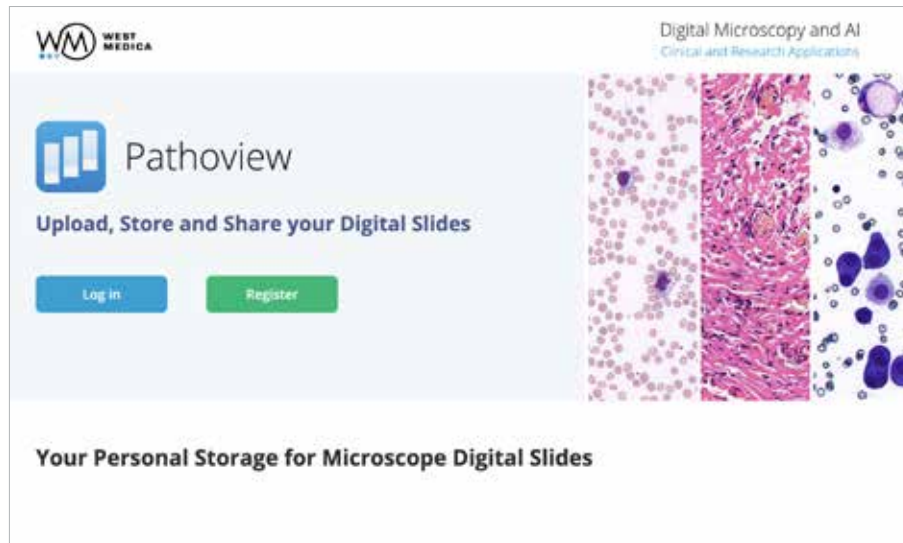
Online testing and validation of specialists' knowledge in microscopy

Artificial intelligence for digital microscopy



With artificial intelligence technologies, Vision's digital microscopy solutions optimize and standardize laboratory workflow.

Pathoview



www.pathoview.com

Working with digital slides via internet browser

Upload, view, store and share digital slides



Uploading

Upload your slides in any convenient way: via a web browser, from the Vision and Vision Slide Viewer applications, or send them using your Vision Suite organization.



Storage

Save digital slides in Pathoview, and they will always be at your fingertips wherever you are. Ensure access to digital slides from any device.



Shared access

Information exchange — share and discuss clinical cases with colleagues. Quick and easy sharing of links to slides of any size.



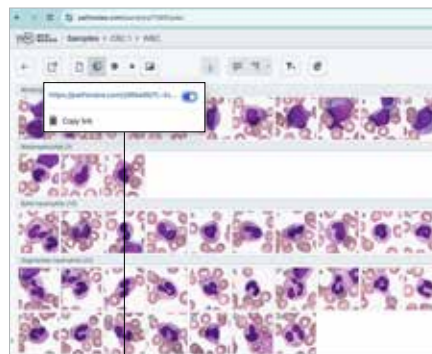
Digital slides

Support various digital slide formats: .mrxs, .svs, .tiff, .ndpi, .dcm.

Vision and Pathoview integration



Select a sample and click the “Share” button on the toolbar



Copy the link and send it to your colleagues for consultation



Your colleague views the digital slide on any device

Digital scanning analyzers

Key features	Vision A1	Vision Assist	Vision Pro	Vision Ultimate
Clinical modules	Vision Hema Vision Extended RBC Vision Extended PLT Vision RET	Vision Hema Vision Extended RBC Vision Extended PLT Vision RET	Vision Hema Vision Extended RBC Vision Extended PLT Vision RET	Vision Hema Vision Extended RBC Vision Extended PLT Vision RET
Working mode	Continuous loading	Queue (for 4 slides only)	Queue, random access	Queue, continuous and random access, STAT sampling, 24/7
Scanning	Automatic	Automatic	Automatic	Automatic
Loading a slide	1 slide	1 or 4 slides	4 or 8 slides	120 or 200 slides
Specifications	Scanning unit Personal computer Monitor	Scanning microscope Personal computer Monitor	Scanning microscope Personal computer Monitor	Scanning microscope Personal computer Monitor Control touch-monitor
Objectives	60x Oil	10x, 50x Oil, 100x Oil	10x, 40x/60x Oil, 100x Oil	2,5x, 10x, 50x Oil, 100x Oil
Research method	Bright field	Bright field	Bright field	Bright field
Illumination	Köhler illumination, LED	Köhler illumination, LED	Köhler illumination, LED	Köhler illumination, LED
Communications	Bidirectional connection to LIS, LIS2-A2 (ASTM), HL7	Bidirectional connection to LIS, LIS2-A2 (ASTM), HL7	Bidirectional connection to LIS, LIS2-A2 (ASTM), HL7	Bidirectional connection to LIS, LIS2-A2 (ASTM), HL7

Pre-classification has to be validated by the specialist reviewing the galleries of cells.

Please check the intended use and the registration in your local regulation.

Depending on the regulations of the respective region, some products may be used for research purpose only.

We reserve the right to change specification without notice.



West Medica Produktions- und Handels-GmbH
Brown-Boveri-Straße 6, B17-1
2351 Wiener Neudorf, Austria
tel.: +43 (0) 2236 892465, fax: +43 (0) 2236 892464
vienna@westmedica.com, www.wm-vision.com

Official Distributor